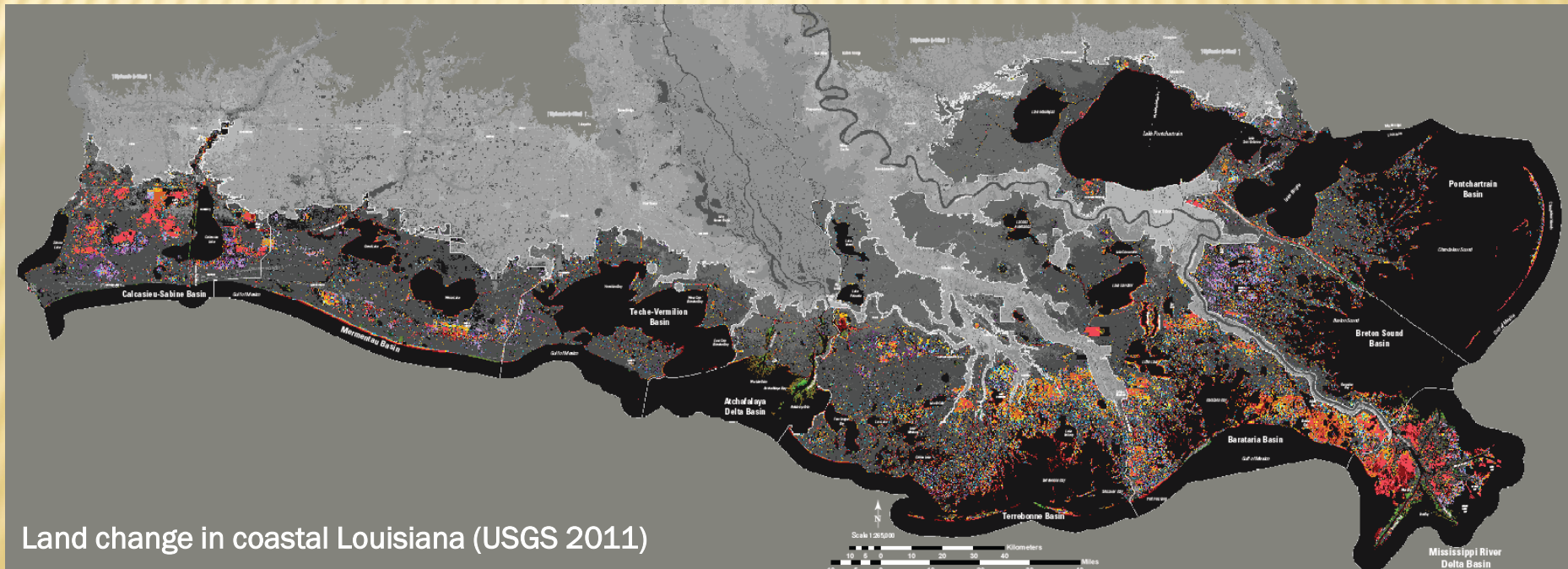


Visualizing Upper Trophic and Ecosystem Modeling Outputs with EverVIEW to Inform the Decision Process in Coastal Louisiana

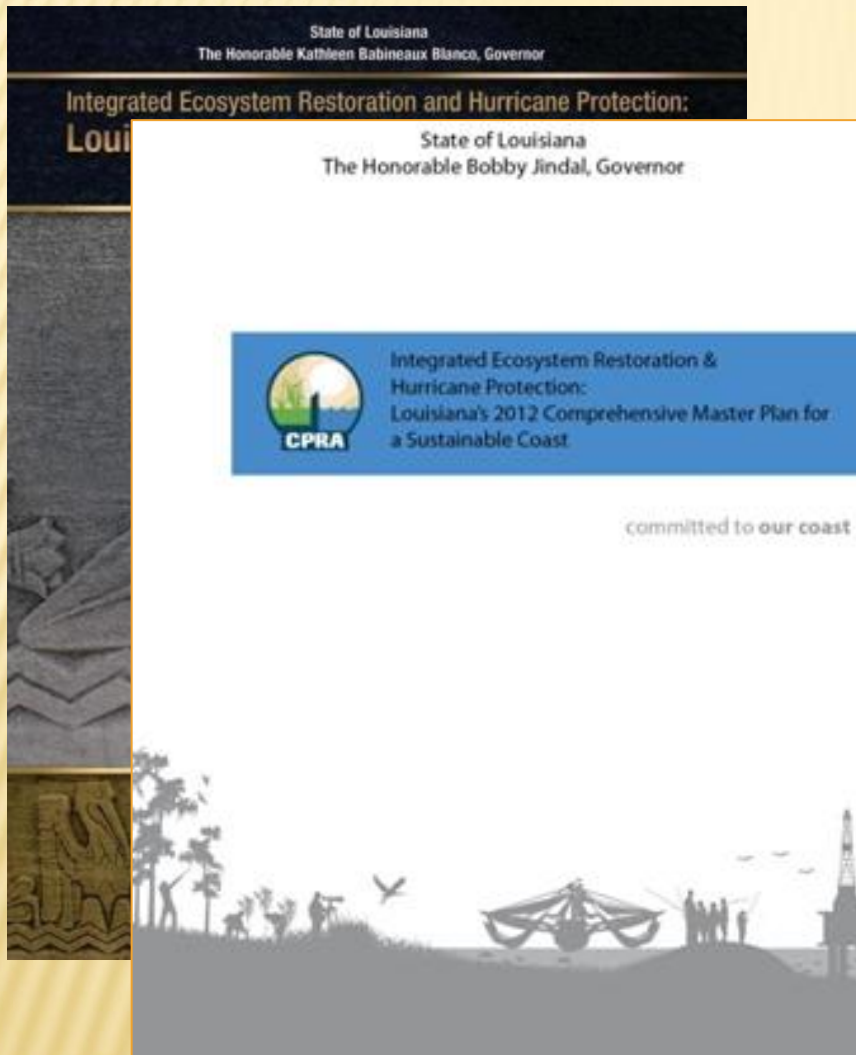
2012 Master Plan

Craig Conzelmann | Carol Parsons Richards | Kevin Suir

- Loss of nearly 2,000 sq mi of wetland since the 1930s
- 2007 Master Plan – ecological restoration and risk reduction
- 5-yr updates, Coastal Protection and Restoration Authority
- 2012 Master Plan – Approved by LA Legislature



Land change in coastal Louisiana (USGS 2011)



Flood Protection

Reduce economic losses from storm-based flooding

Natural Processes

Promote a sustainable coastal ecosystem by harnessing the processes of the natural system

Coastal Habitats

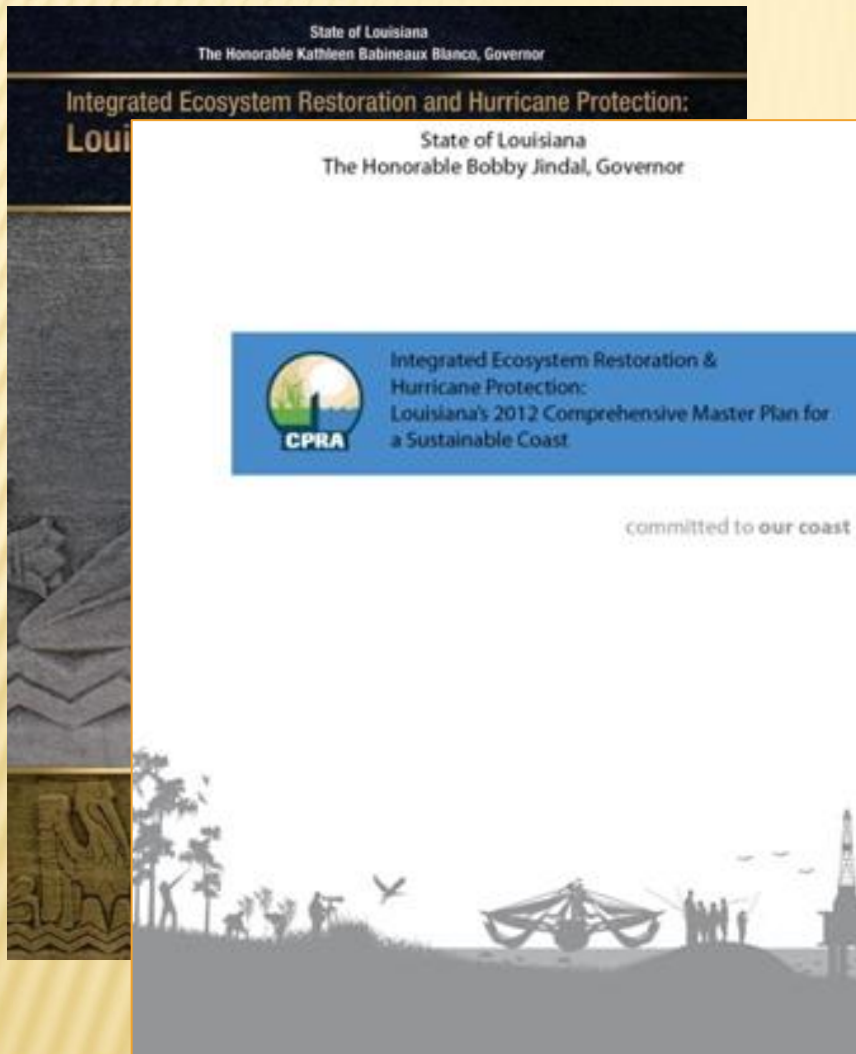
Provide habitats suitable to support an array of commercial and recreational activities coast wide

Cultural Heritage

Sustain Louisiana's unique heritage and culture

Working Coast

Provide a viable working coast to support industry



Flood Protection

Reduce economic losses from storm-based flooding

Natural Processes

Promote a sustainable coastal ecosystem by harnessing the processes of the natural system

Coastal Habitats

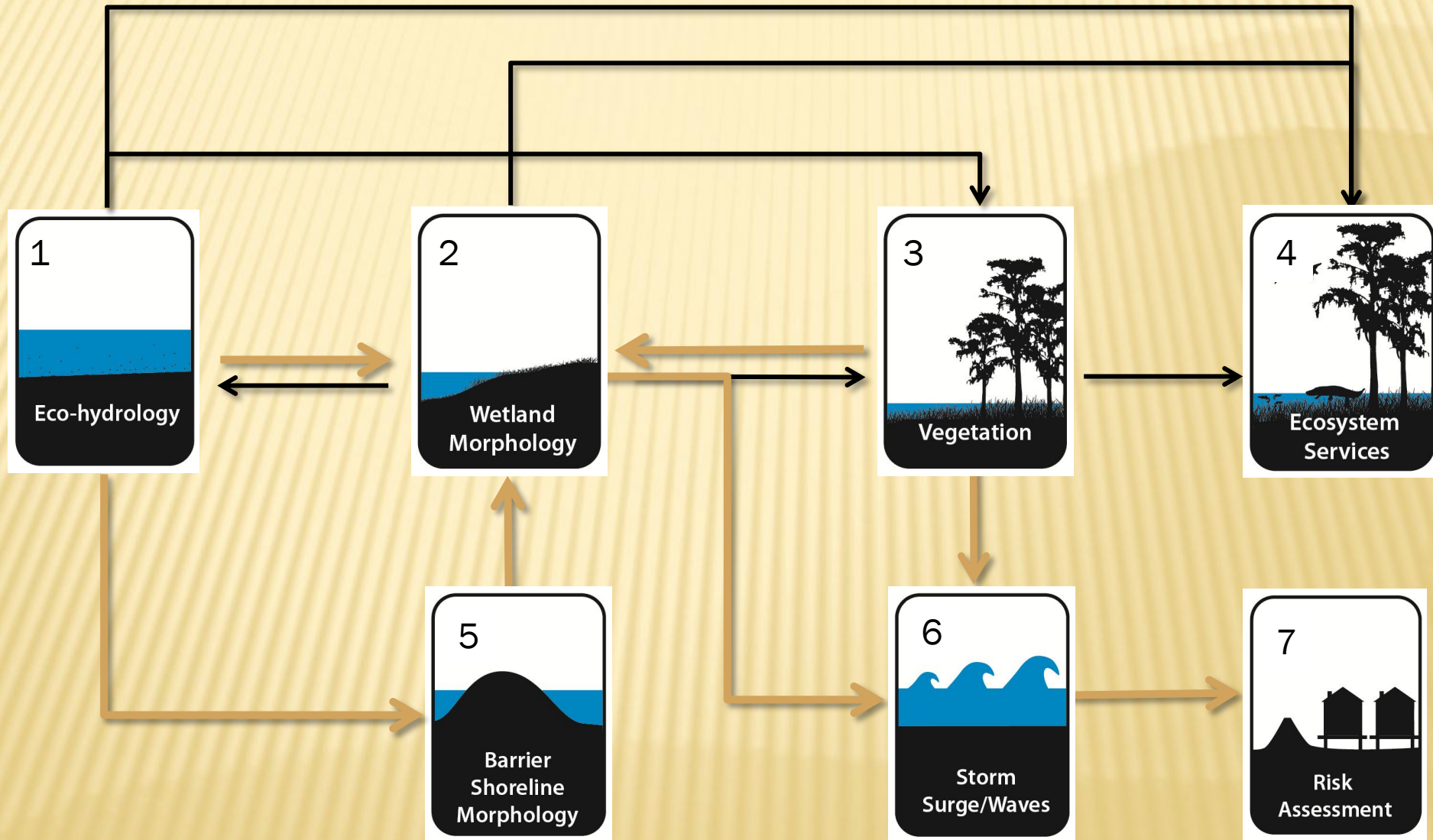
Provide habitats suitable to support an array of commercial and recreational activities coast wide

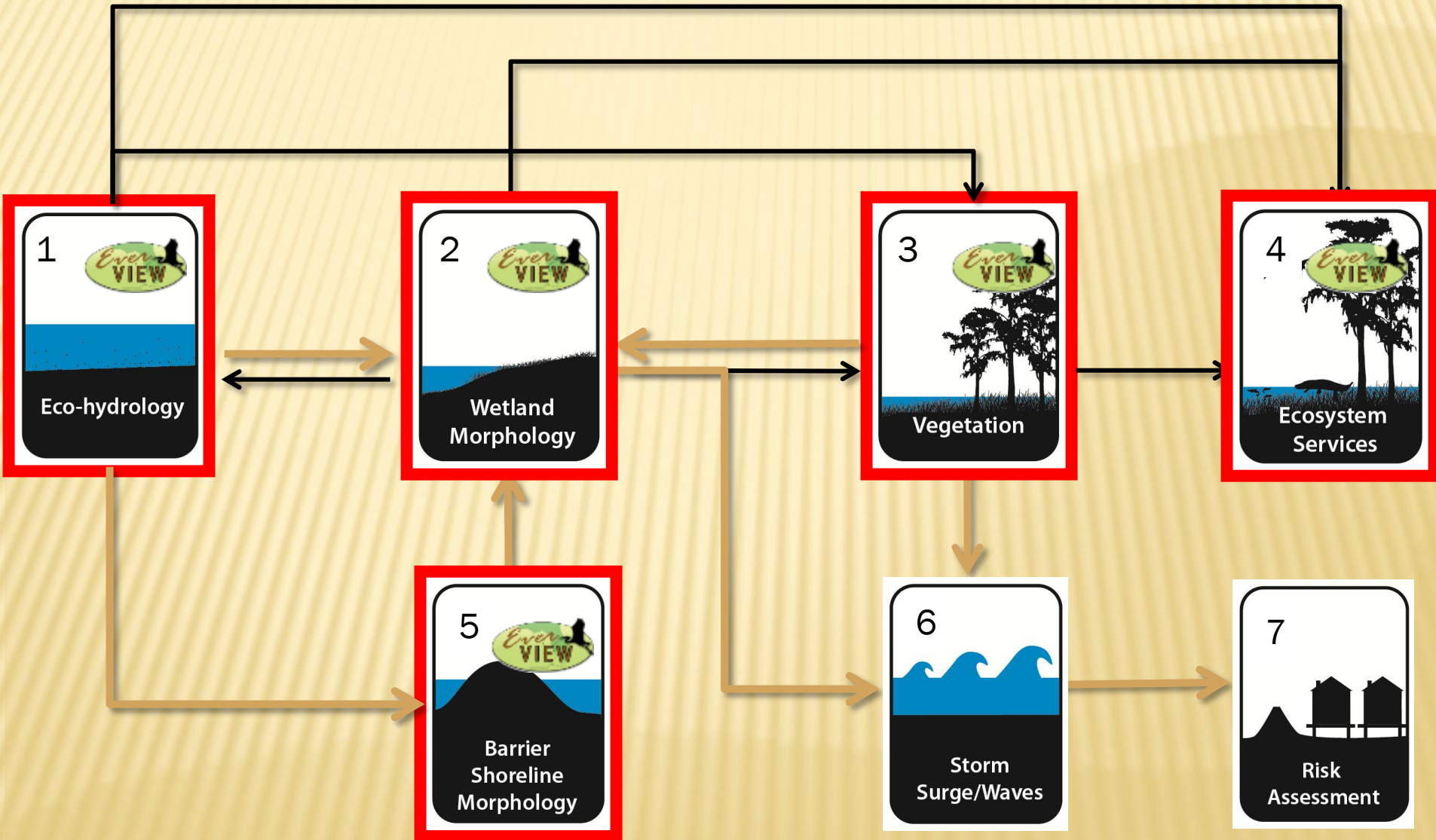
Cultural Heritage

Sustain Louisiana's unique heritage and culture

Working Coast

Provide a viable working coast to support industry





- Coast-wide scale
- 50-year planning horizon
- Scenarios
 - “Moderate Future Scenario”
 - “Less Optimistic Future Scenario”
 - “Moderate Future Scenario w/ High SLR”
- Future Without Action (FWOA)
- 23 Upper Trophic Level and Ecosystem Service models
 - 425 Individual projects (3700 individual runs)
 - 185 Uncertainty Analysis Model Runs

~50,000 files

~2 Terabytes of data

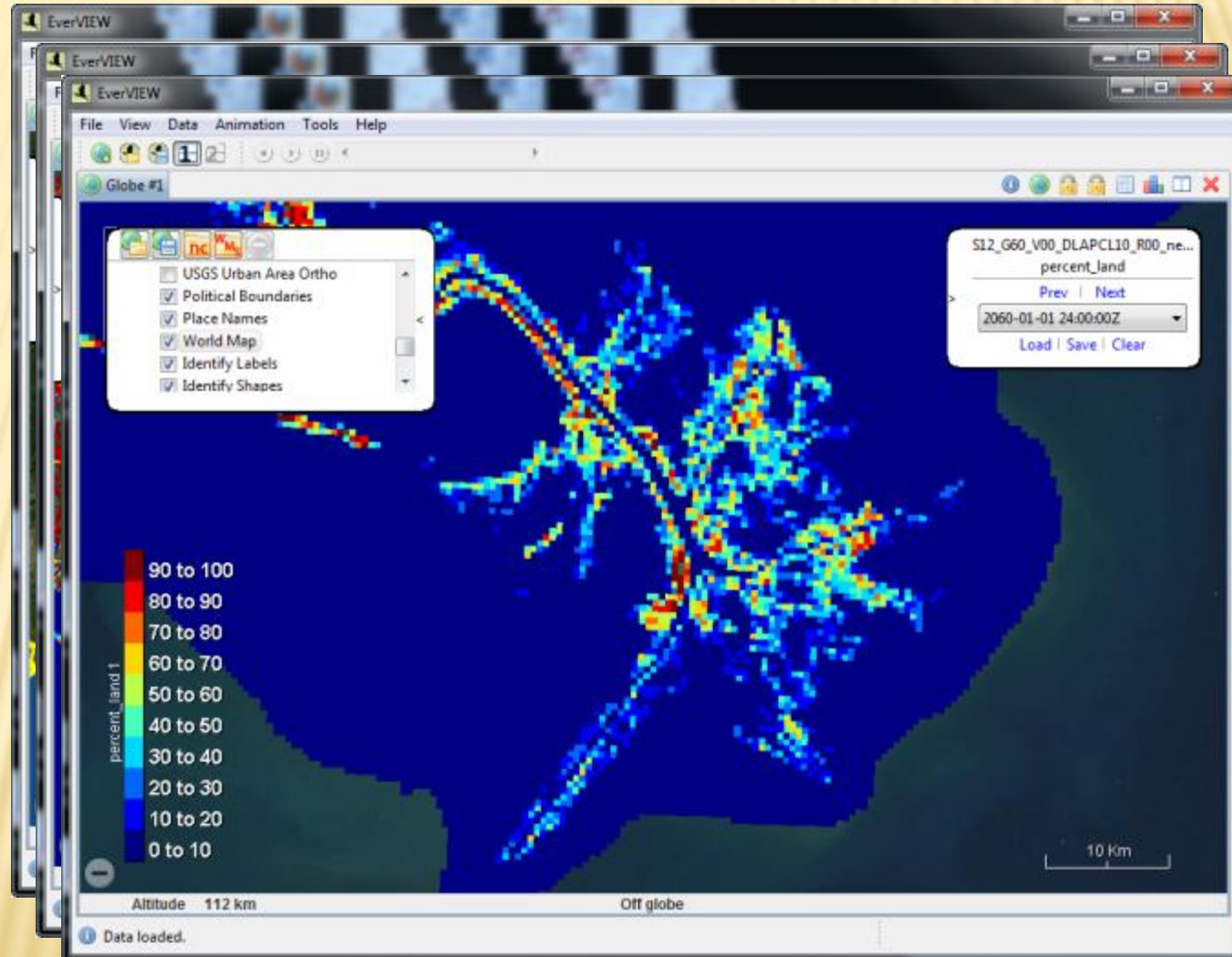
All within 18 months

How do you really SEE all the data?

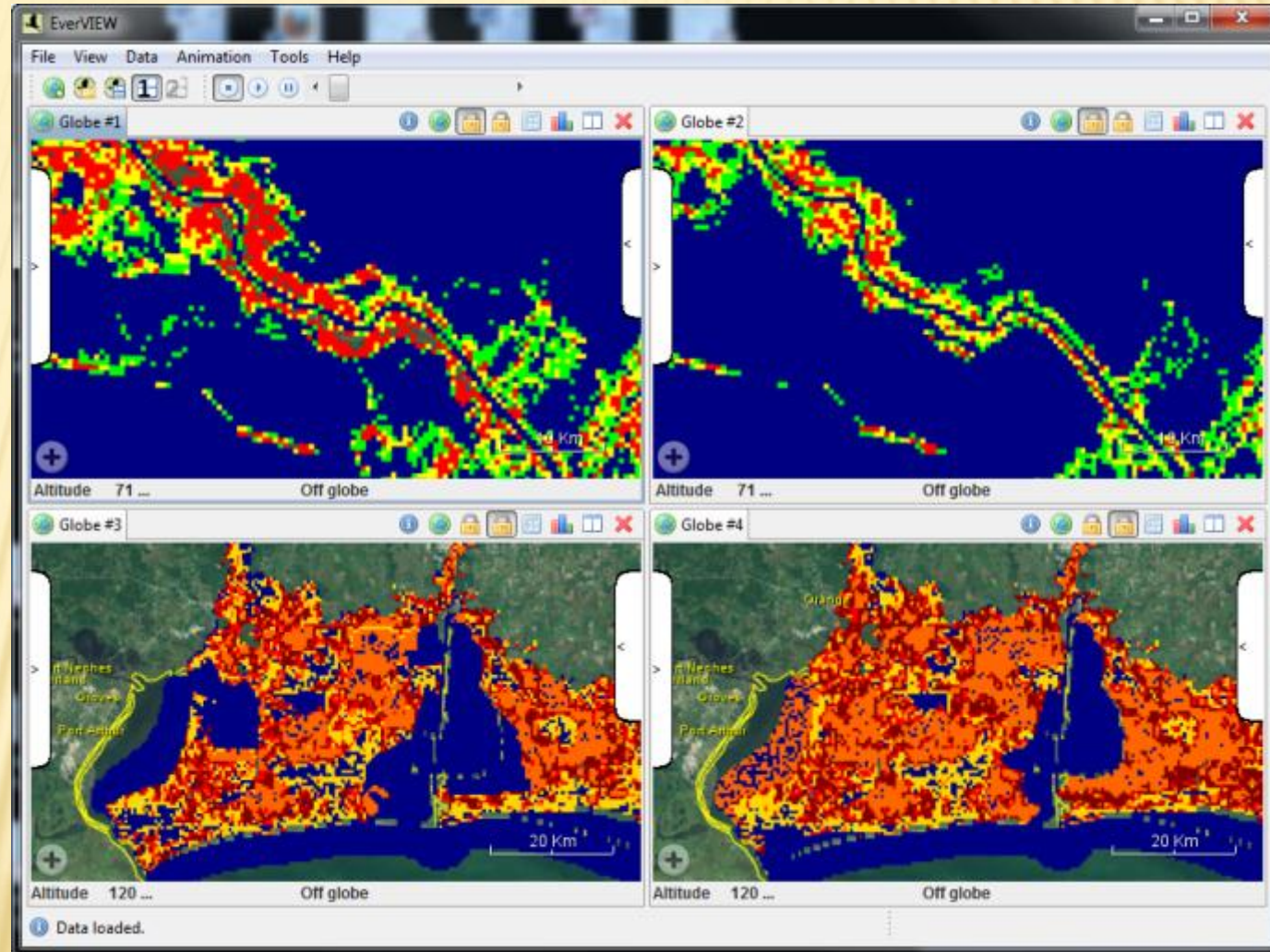
- Joint Ecosystem Modeling (JEM)
 - Standards compliant modeling outputs
- EverVIEW: standards compliant data viewer
 - Increased data value across agencies
 - Interchangeable toolsets



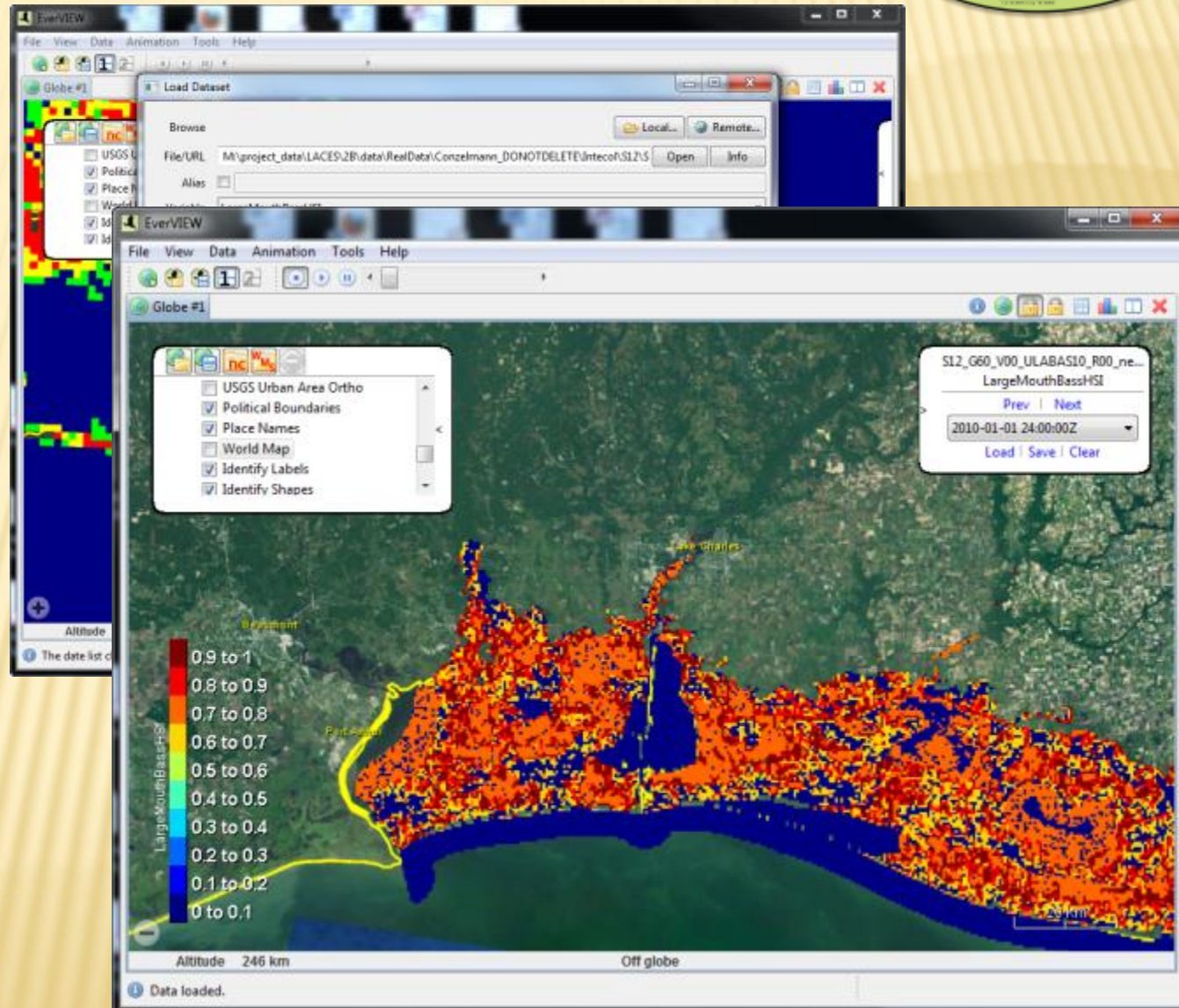
- Map viewer
- Table viewer
- Multi map mode
- Thematic Data(HSI)
- Location tracking
- Animation
- Extensions
 - EverCalc
 - EverChart



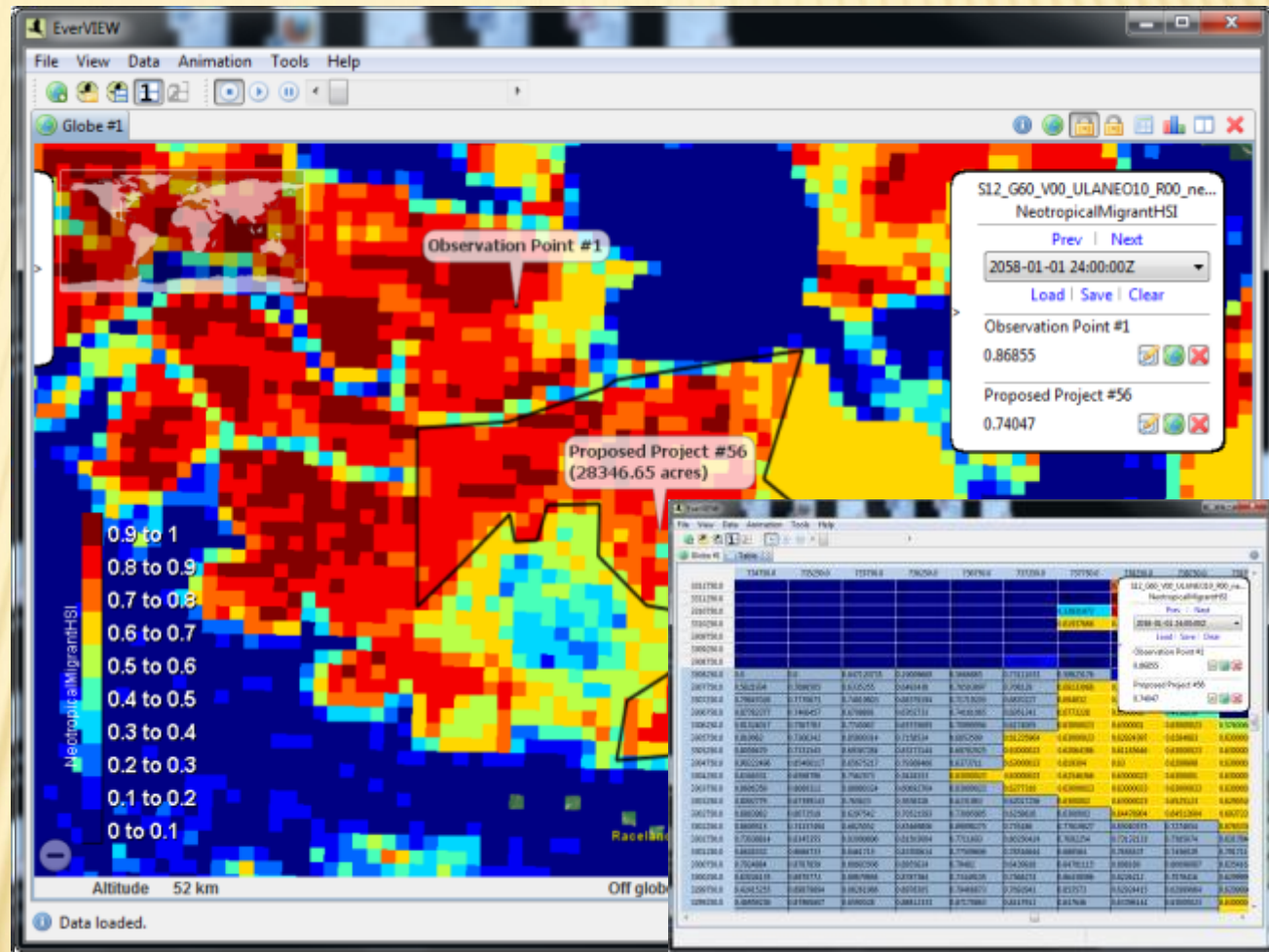
- Map viewer
- Table viewer
- **Multi map mode**
- Thematic Data(HSI)
- Location tracking
- Animation
- Extensions
 - EverCalc
 - EverChart



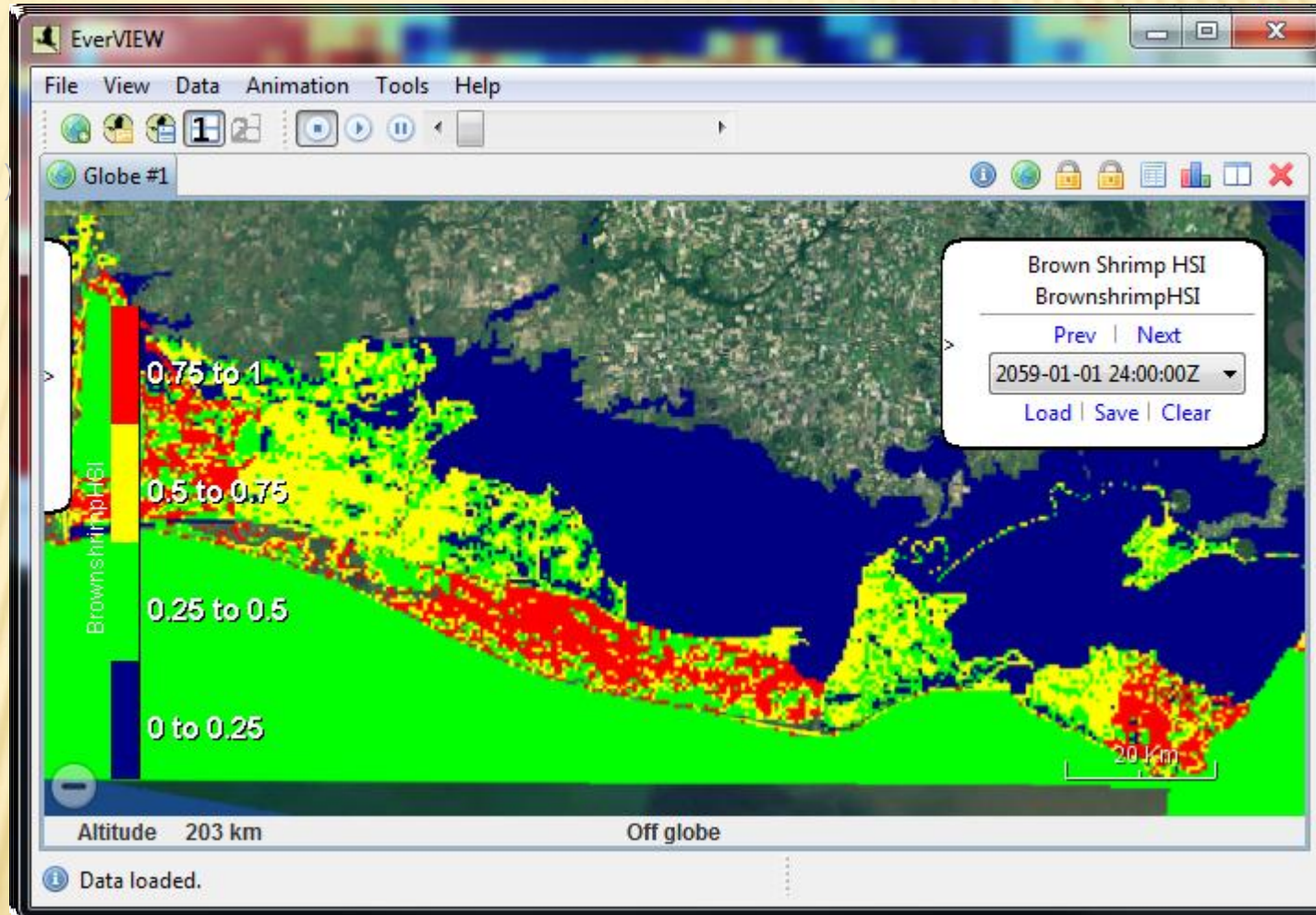
- Map viewer
- Table viewer
- Multi map mode
- **Thematic Data(HSI)**
- Location tracking
- Animation
- Extensions
 - EverCalc
 - EverChart



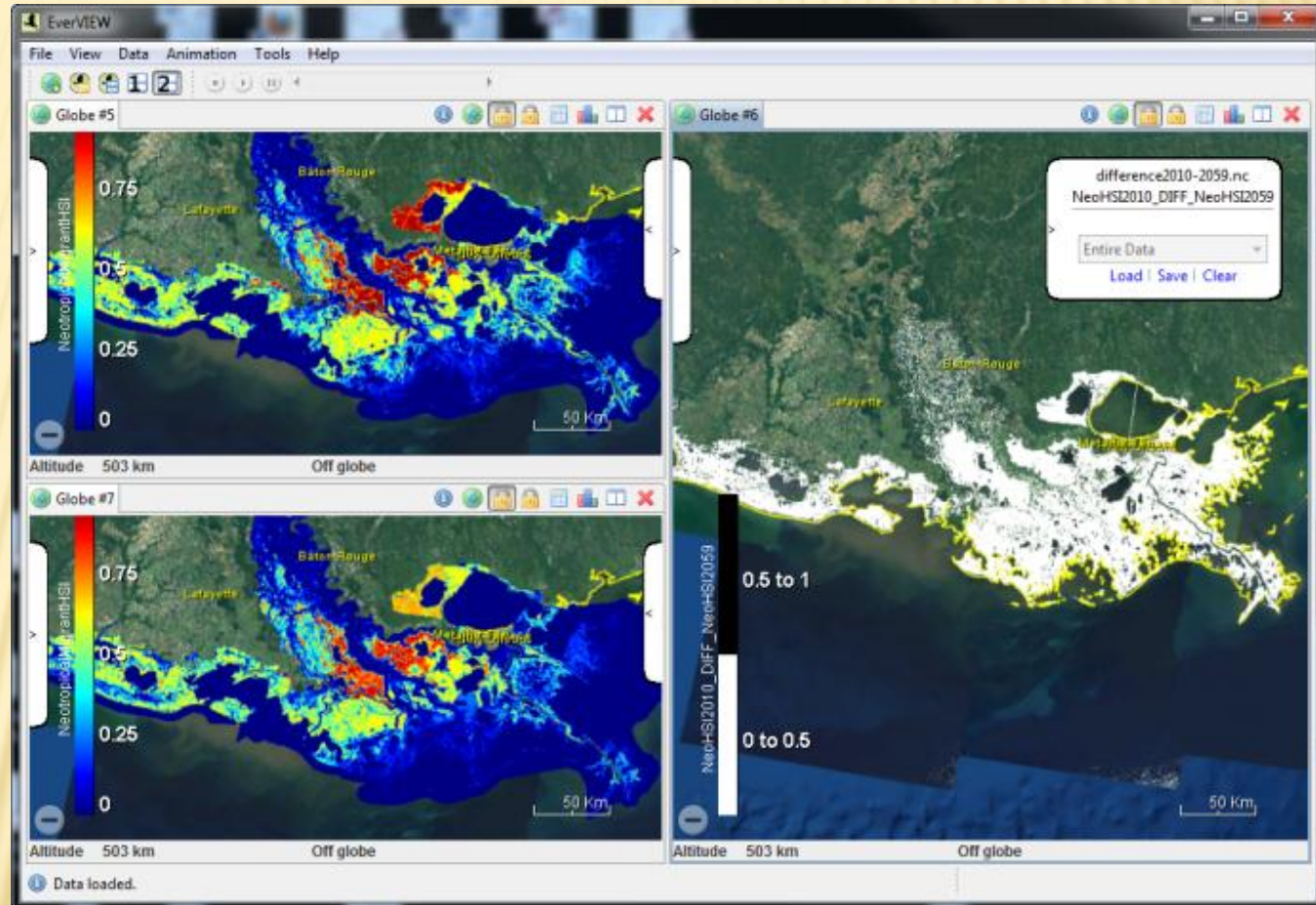
- Map viewer
- Table viewer
- Multi map mode
- Thematic Data(HSI)
- Location tracking
- Animation
- Extensions
 - EverCalc
 - EverChart



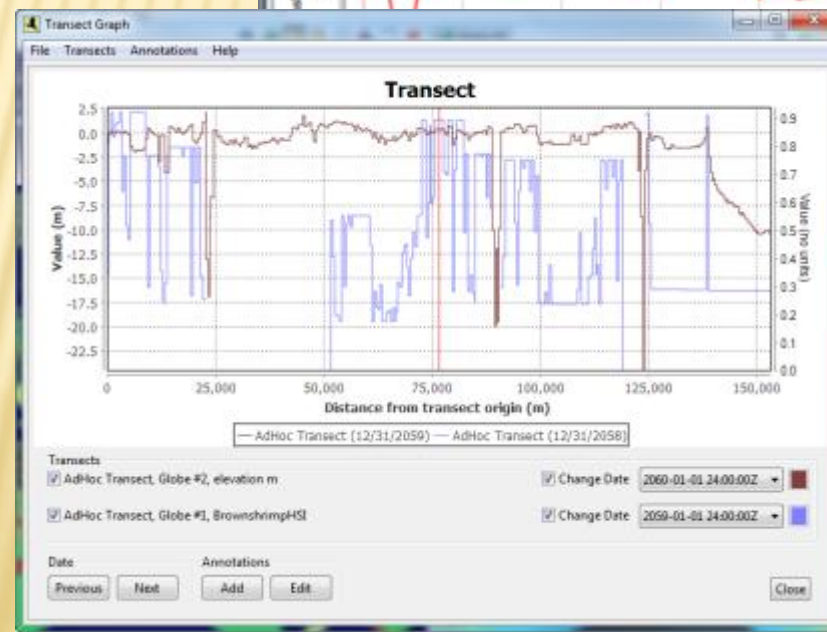
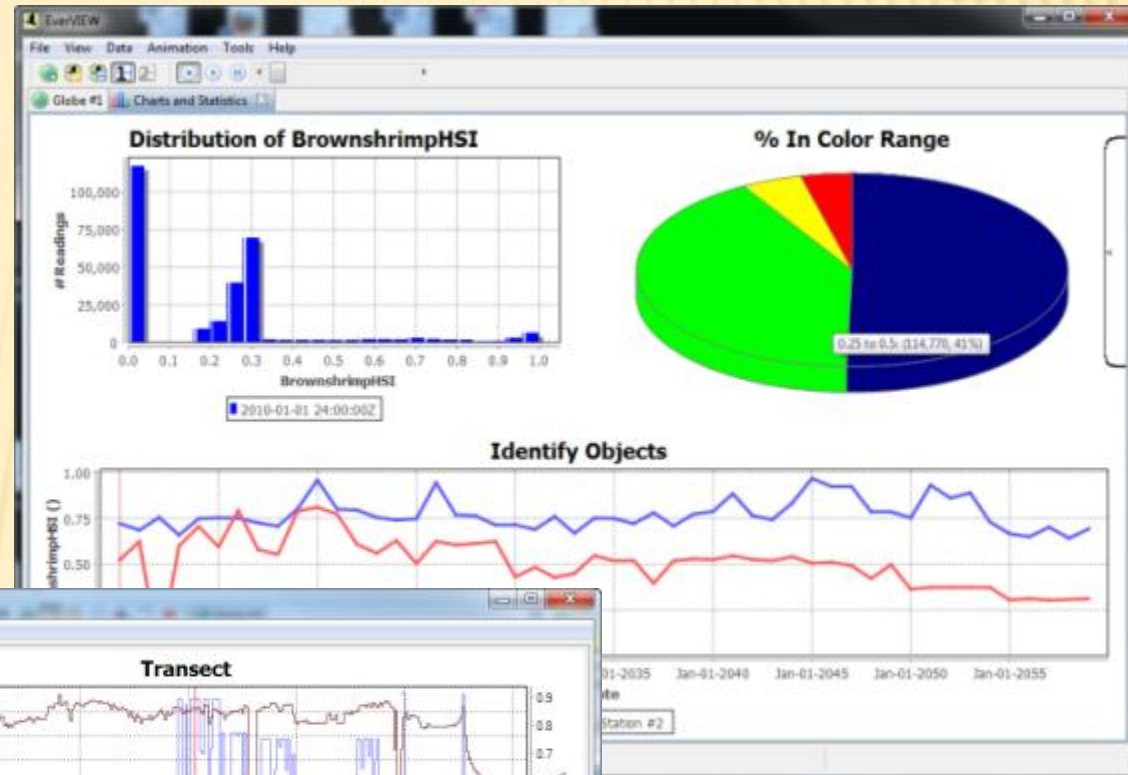
- Map viewer
- Table viewer
- Multi map mode
- Thematic Data(HSI)
- Location tracking
- Animation**
- Extensions
 - EverCalc
 - EverChart



- Map viewer
- Table viewer
- Multi map mode
- Thematic Data(HSI)
- Location tracking
- Animation
- Extensions
 - EverCalc
 - EverChart



- Map viewer
- Table viewer
- Multi map mode
- Thematic Data(HSI)
- Location tracking
- Animation
- **Extensions**
 - EverCalc
 - EverChart



EverVIEW helps you SEE the data...

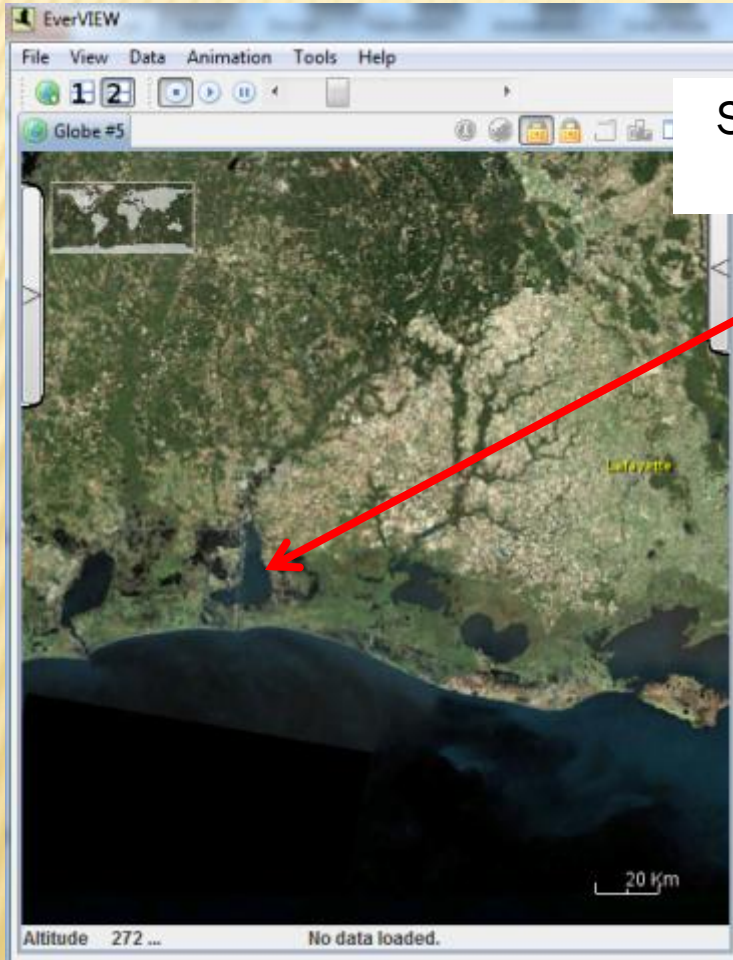
Enables isolation and inspection of ONE element in a multi-dimensional environment.

Future Scenarios

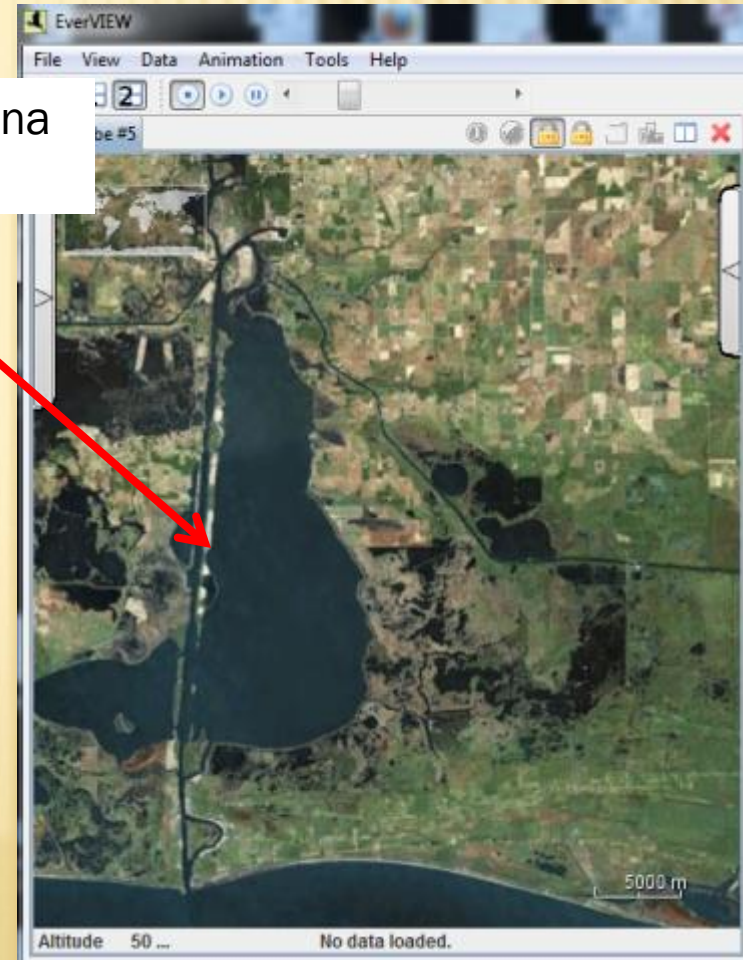
Time

Project Effects

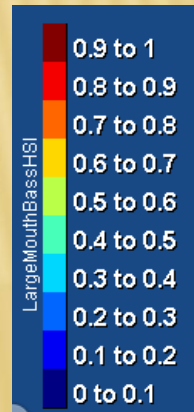
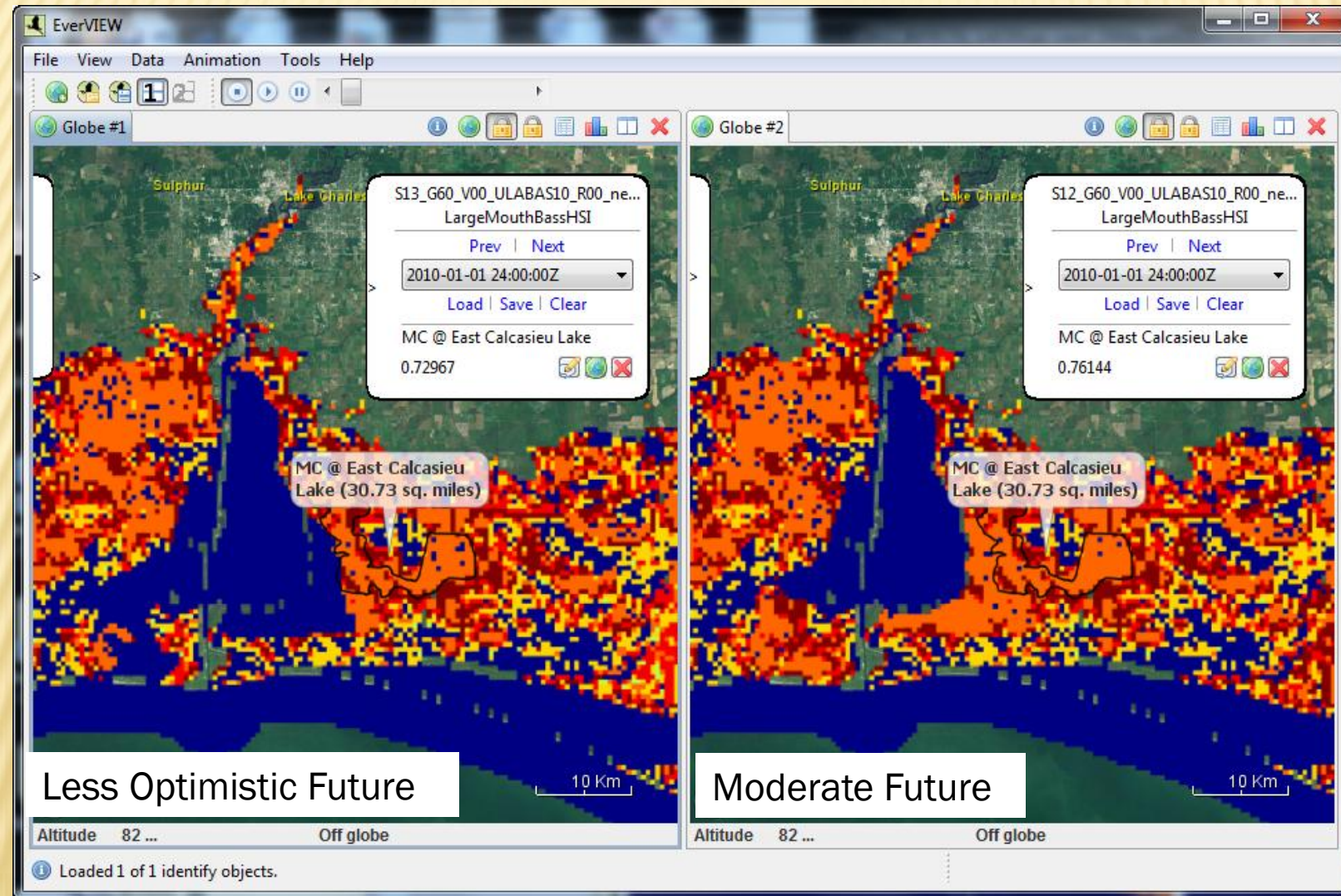
- Comparing Across Scenarios – Less Optimistic vs Moderate Futures
 - Large Mouth Bass HSI



South West Louisiana
Calcasieu Lake



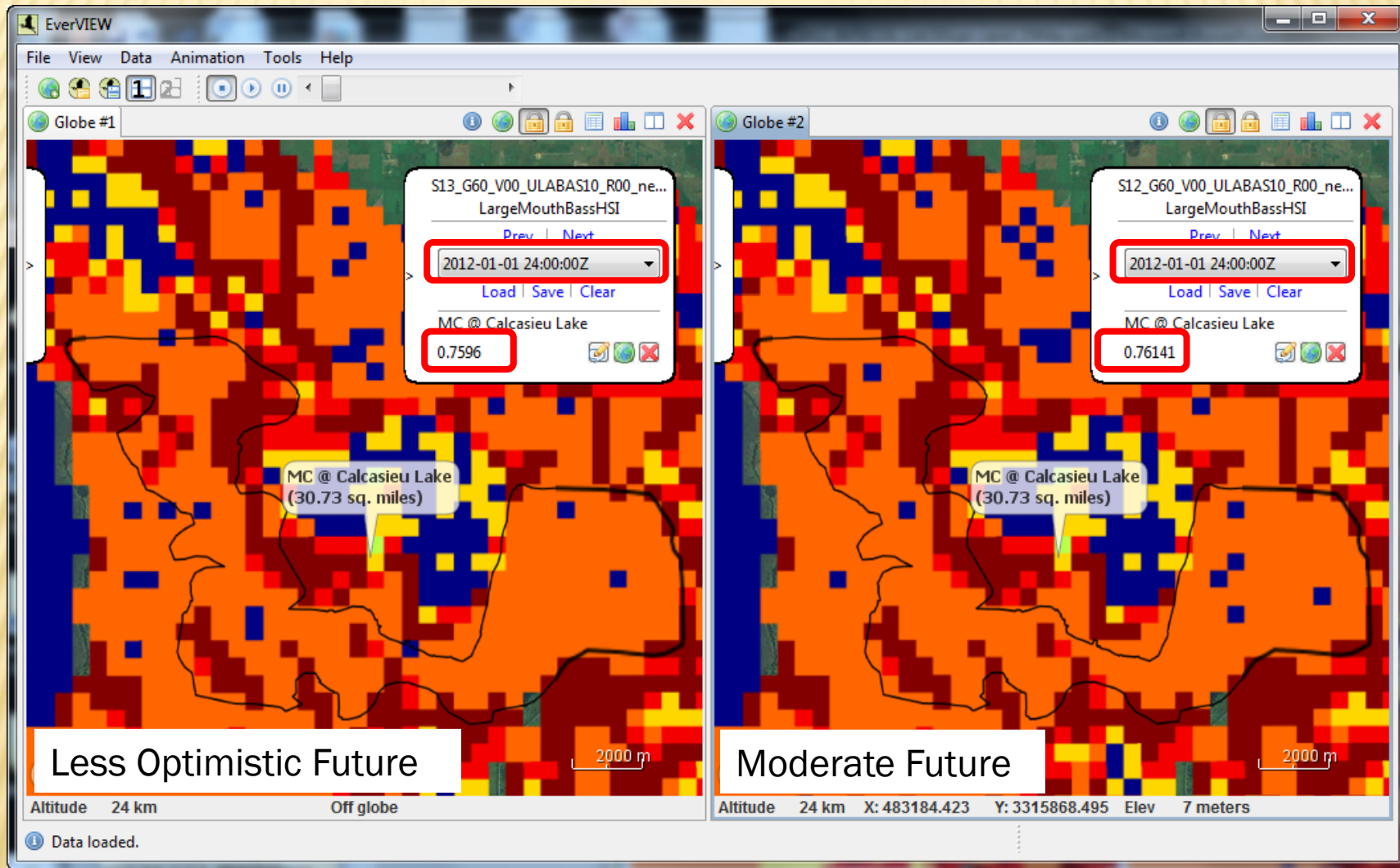
Comparing Across Scenarios – Large Mouth Bass HSI



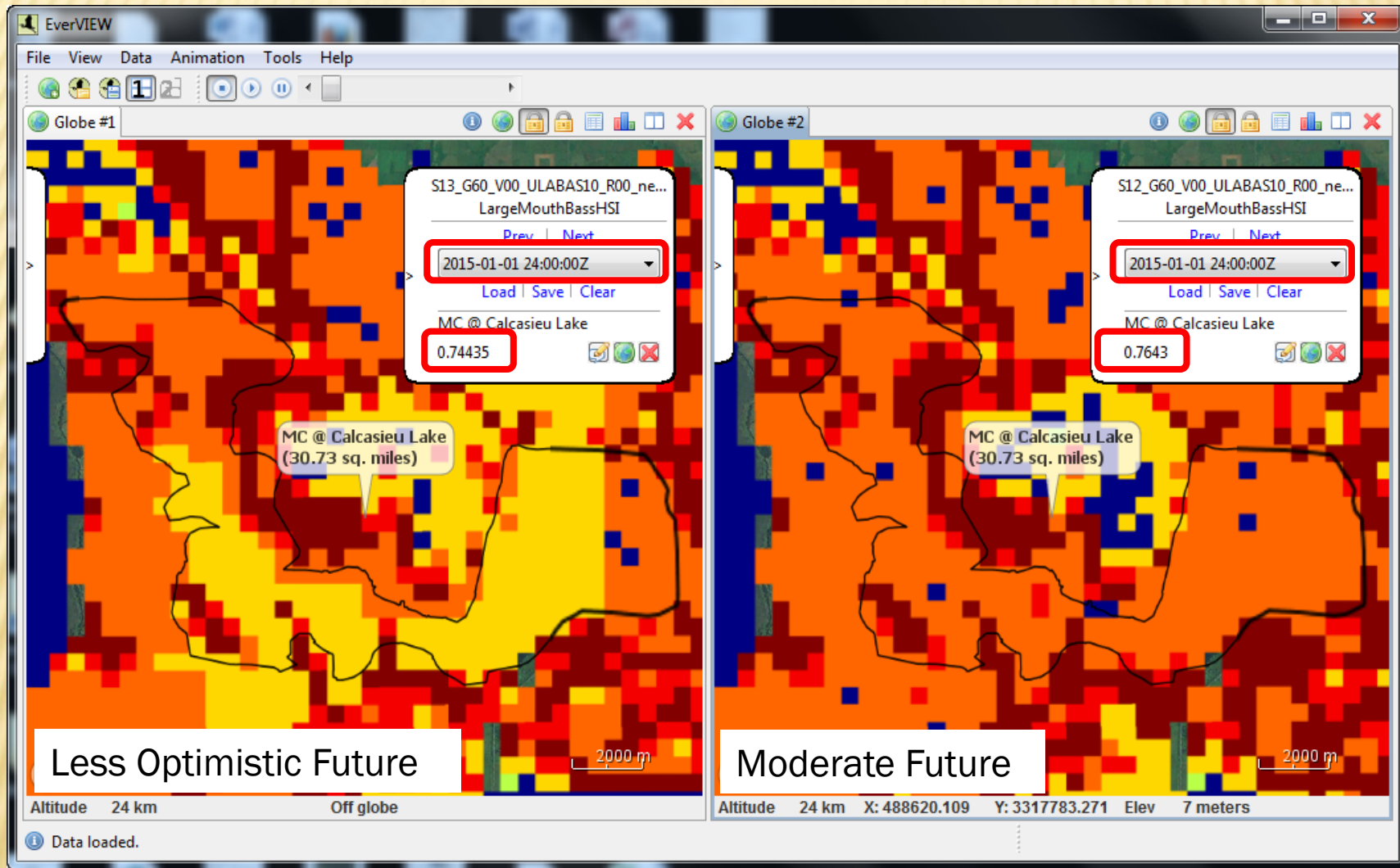
Comparing Across Scenarios – Large Mouth Bass HSI



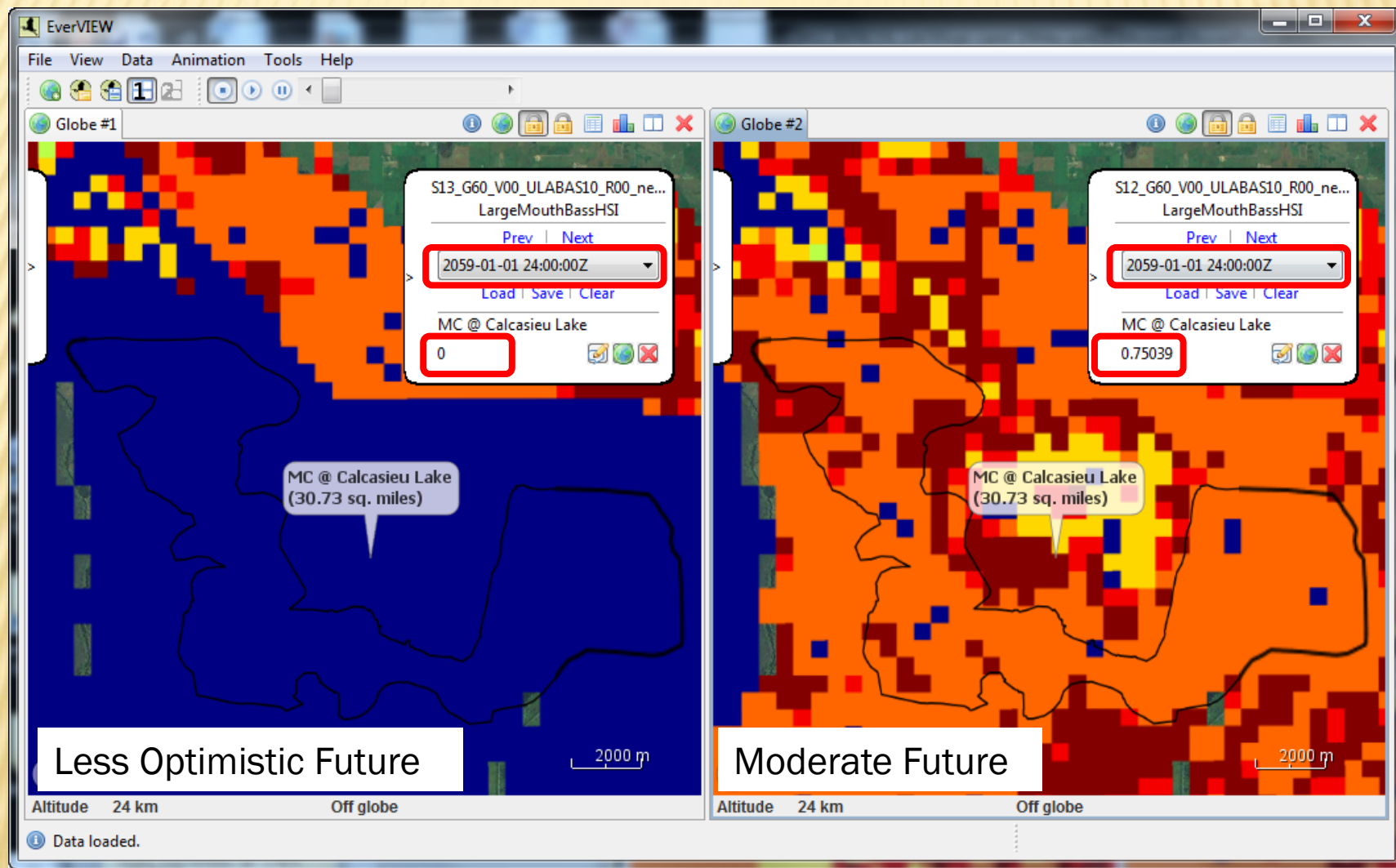
Comparing Across Scenarios – Large Mouth Bass HSI



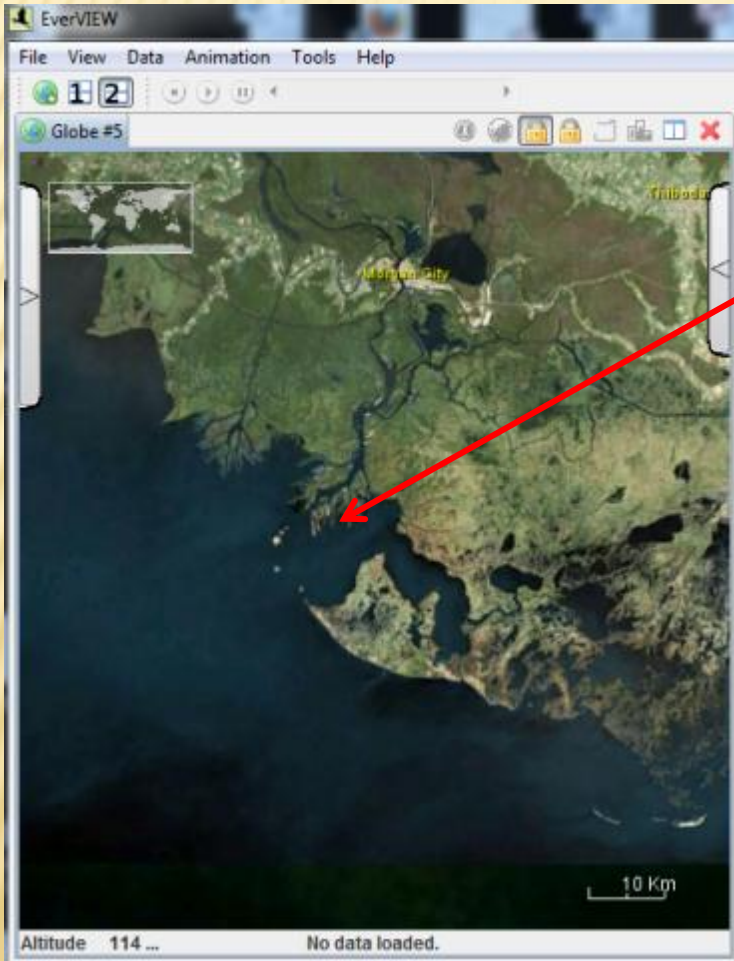
Comparing Across Scenarios – Large Mouth Bass HSI



Comparing Across Scenarios – Large Mouth Bass HSI

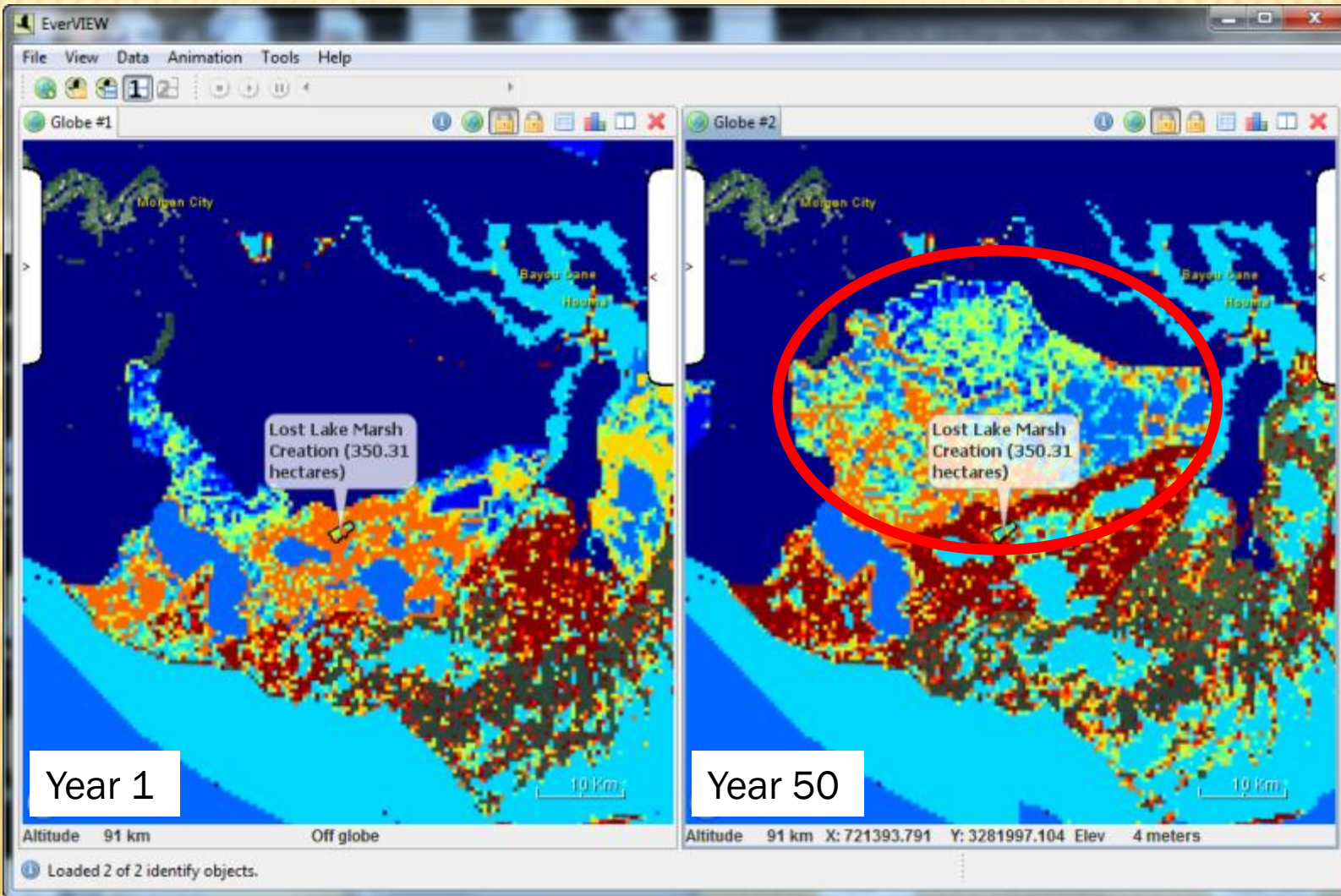


- Comparing Across Time Periods – Year 1 vs Year 50
 - Brown Shrimp HSI

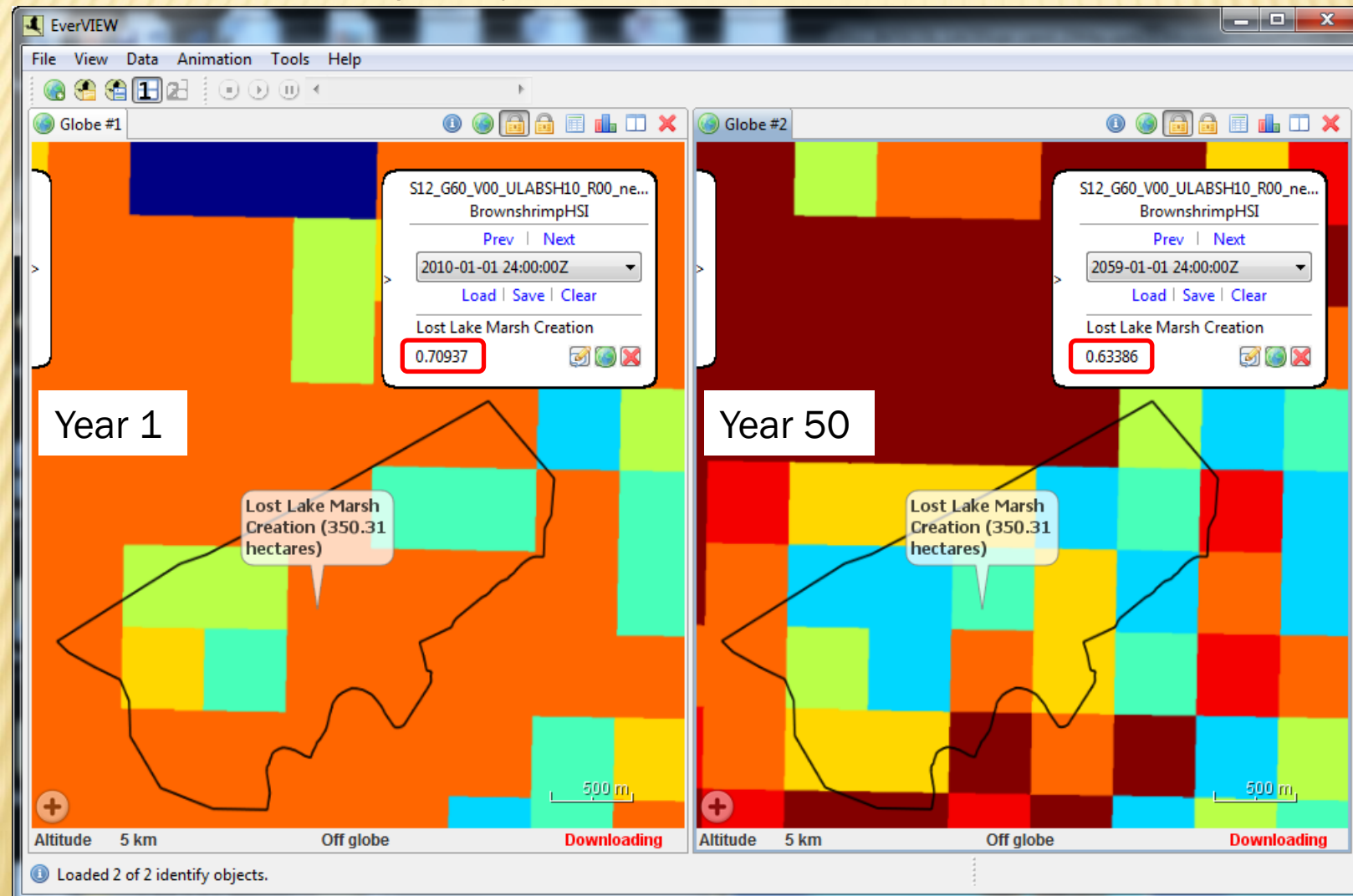


South Central Louisiana
Atchafalaya River

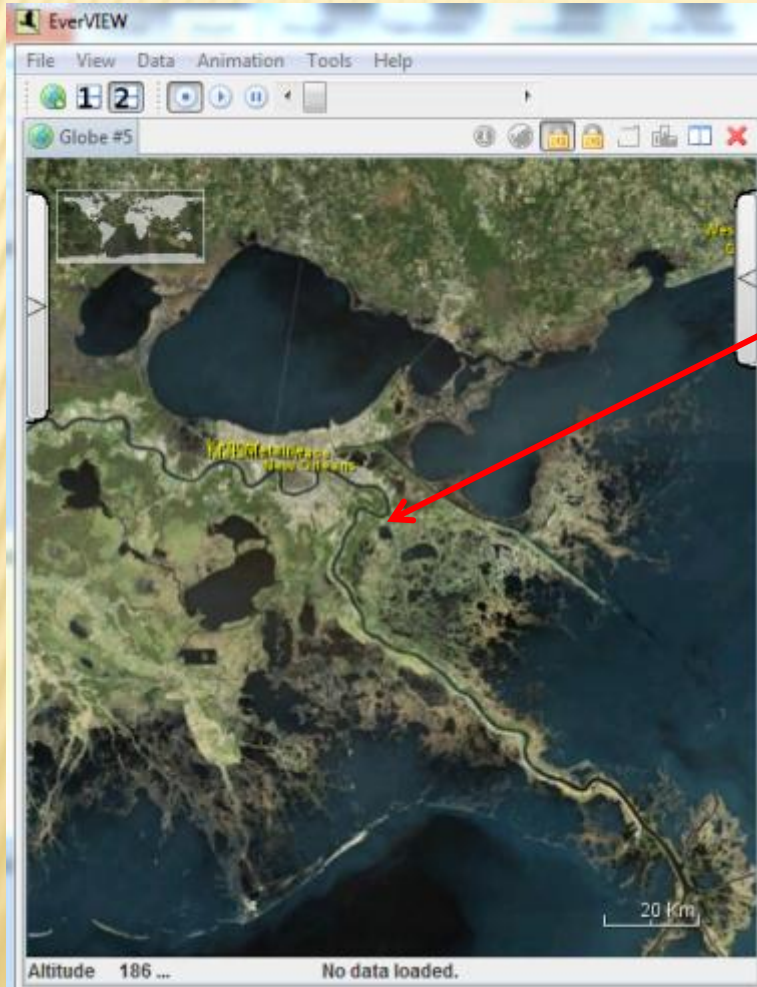
- Comparing Across Time Periods – Year 1 vs Year 50
 - Brown Shrimp HSI (Moderate Future Scenario – Future Without Action)



- Comparing Across Time Periods – Year 1 vs Year 50
 - Brown Shrimp HSI (Moderate Future Scenario – Future Without Action)

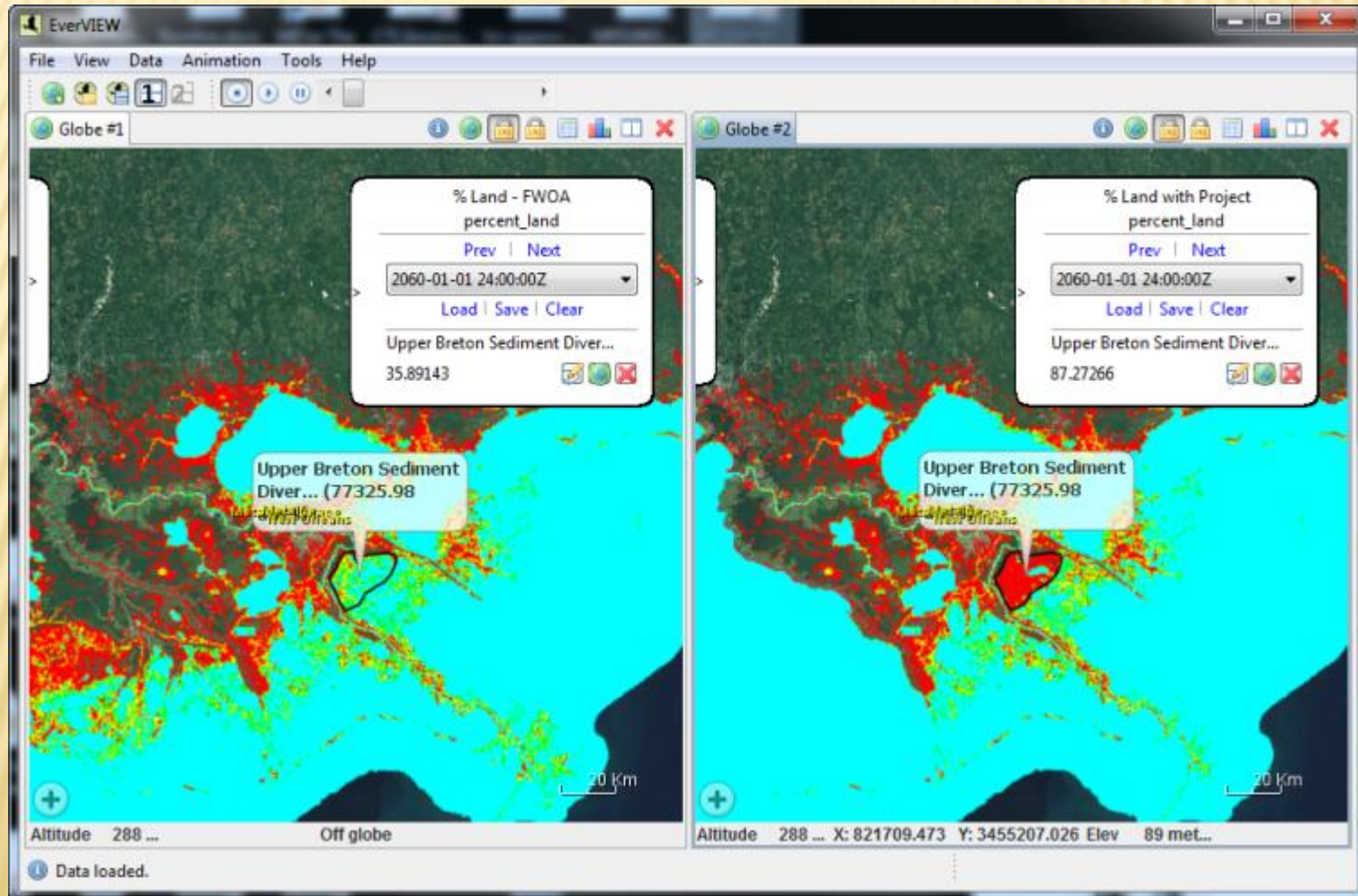


- Comparing between FWOA and Project

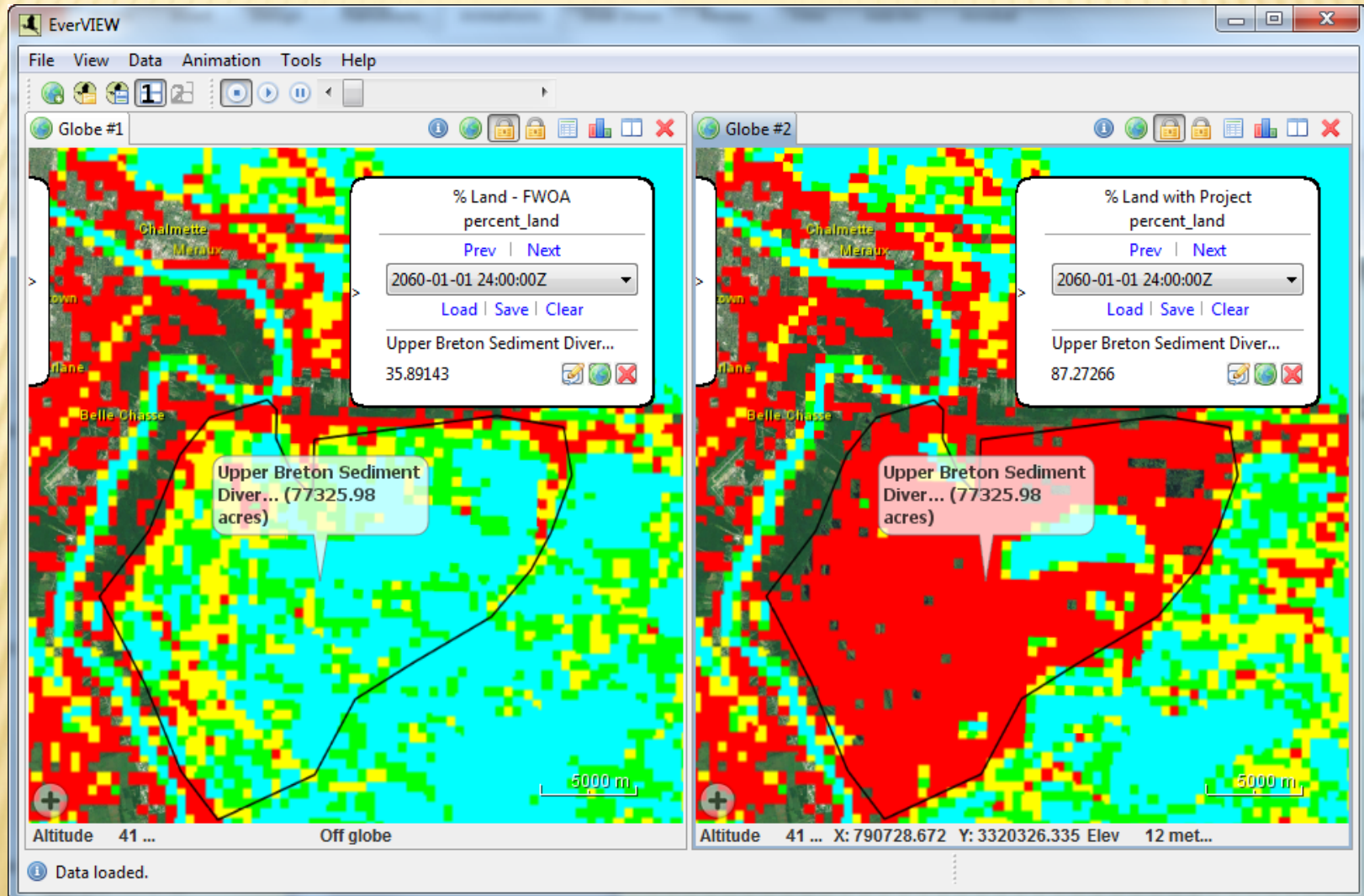


South Eastern Louisiana
Upper Breton Sediment Diversion
250,000 Cubic Feet per Second

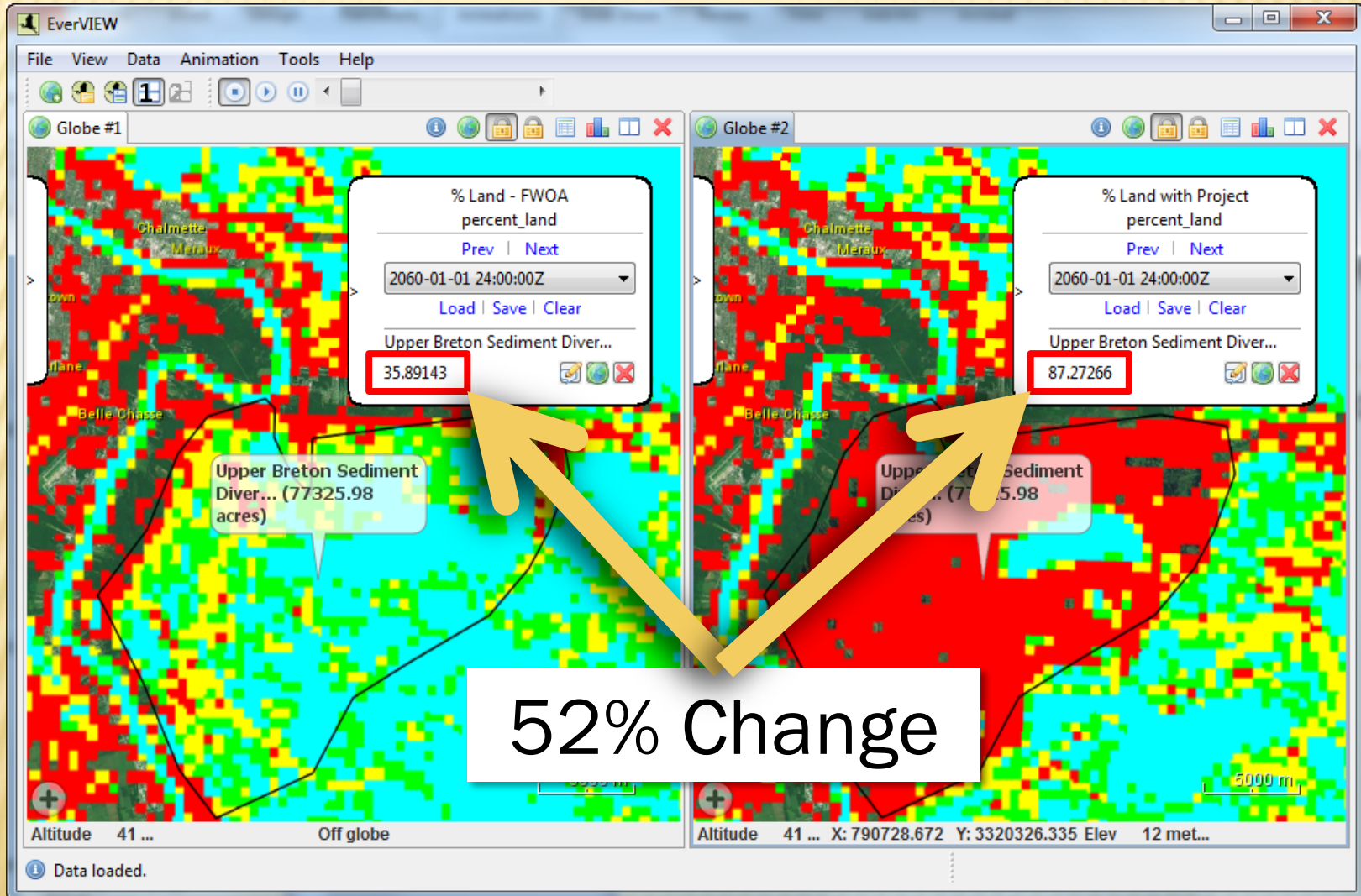
Comparing between FWOA and Project - Percent Land



Comparing between FWOA and Project - Percent Land



Comparing between FWOA and Project - Percent Land



*EverVIEW lets the user
SEE the data.*

If you'd like to SEE EverVIEW
for yourself....



USGS JEM Booth